



# BEDDELEEM

SYSTEM DESCRIPTION V1901



— JB FRAME



# B



## — JB FRAME

The JB FRAME relocatable partition wall is a modular, floor-to-ceiling partition with a steel structure and glass panels in an aluminium frame.

The design features clean right angles and door surrounds, recessed plinths and friezes and recessed vertical hollow joints.

The relocatable partition wall can be used in all non-residential buildings and is ideal for creating layouts in office buildings.

The partition has a limited number of parts so moving it takes a minimum of time and no specialised tools.

**BEDDELEEM**



# — JB FRAME



## Glazed partition EI00 — EI30 — EI60

The glazed partition consists of two window frame halves in extruded aluminium, each fitted with laminated or toughened float glass mounted in a plastic glazing profile.

### Glass types:

**EI00\***  
— 2 x clear toughened glass  
— 2 x laminated glass

**EI30**  
— 16 mm fire-resistant glass

**EI60**  
— 25 mm fire-resistant glass





# Unite

# &

# combine—

## 01 — Door assembly on floor spring



An aluminium doorway frame whether or not completed with a door on a floor spring. This may be a glazed or plain door leaf.

## 03 — Glazed aluminium door assembly



An aluminium doorframe with a door leaf that consists of an aluminium frame with single or double glazing.

## 02 — Plain door assembly



The door leaf is either 40 mm or 50 mm thick in an aluminium or steel door frame according to the requirements.

## 04 — Glazed sliding door



A glazed sliding door that slides in front, in back or into the partition.

## 05 — Fully glazed door assembly



A door leaf in toughened safety glass in an aluminium door frame.

## 06 — Plain sliding door

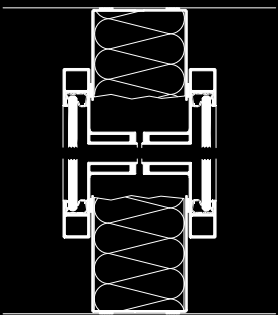


The door leaf is either 40 mm or 50 mm thick that slides in front, in back or into the partition.

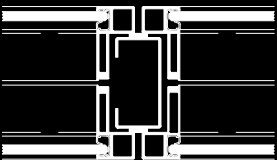
# — doors

B

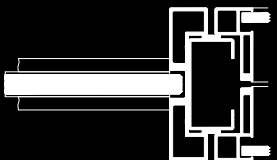
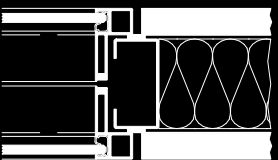
# JB FRAME technical details



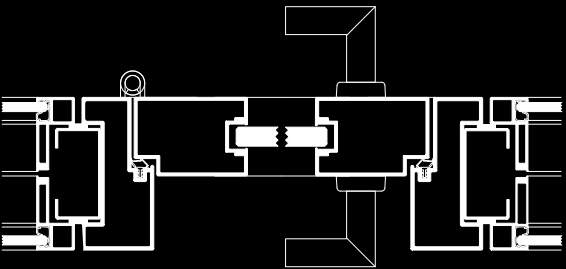
Vertical cross-section



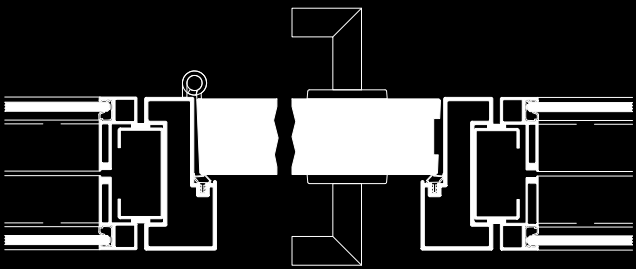
Horizontal cross-section



Profile for conversion to JB 2000 partition system. Profile for conversion to JB 4000 partition system.



Glazed aluminium door assembly  
Single glass, placed central



Plain door assembly



PRODUCT INFORMATION

PARTITION WIDTH

The standard module for this partition is 1200 mm.  
(Other modules available on request)

PARTITION HEIGHT

Partition height can be up to 3000 mm in one panel.  
Greater heights are available on request, always with a panel interruption.

PARTITION THICKNESS

The partition thickness is 100 mm.

BUILDING TOLERANCES

Despite the narrow profiles the system can cope with the following building tolerances:  
± 15 mm for the floor  
± 15 mm for the ceiling

WEIGHT

JB FRAME EI00	ca 33kg/m² - 37kg/m²
JB FRAME EI30	ca 56kg/m²
JB FRAME EI60	ca 78kg/m²

PAINTWORK

All visible profiles are available in a choice of RAL colour. Ask for our sample card for the most recent range.

REACTION TO FIRE

The JB FRAME glass partition is non-flammable, Class A1 in accordance with EN 13501-1 and meets the highest classification for reaction to fire.

BRANDWEERSTAND

The fire resistance with the EI30 and EI60 wall is achieved by a centrally located fire-resistant glazing, instead of 2 panels in the EI00 version. Depending on the selected fire resistance, the structure may change slightly, the view remains the same.

ACOUSTICS

The acoustic tests are conducted in accordance with the standard EN ISO 140 or EN ISO 10140. The acoustic performance is displayed with the single number rating according to the NBN EN ISO 717-1, and with the class according to the NBN S01-400.

Glazed partition

	NBN S01-400	NBN EN ISO 717-1 (Rw)
G39	IVb	39dB
G42	IIIb	42dB
G43*	IIIb	43dB
G45	IIIb	45dB
G46	IIIa	46dB
G48	IIb	48dB

\* calculated value

Note: All certificates available on request

For better performance, please consult our JB QUIET range.  
A partition system with superior acoustic values and similar detailing to the Standard JB 2000 partition.

*In the interests of quality, we reserve the right to adapt technical elements and characteristics of the products, without further commitment on our part.  
This document is entirely the property of Beddeleem Ltd, no content may be copied, in whole or in part, without her written agreement.*





# BEDDELEEM

Venecoweg 14A, 9810 Nazareth  
T +32 9 221 89 21 — F +32 9 220 26 25  
E [info@beddeleem.be](mailto:info@beddeleem.be)

[BEDDELEEM.BE](http://BEDDELEEM.BE)

